

Casa Systems Upstream US16X8 Module



Feature Highlights

Superior Channel Density

Software upgradeable to a maximum 8 channels per port and 128 channels per module

Complete DOCSIS Unit

Complete DOCSIS upstream unit that includes RF burst receiving, signal demodulation, DOCSIS upstream MAC, PHY, as well as packet processing and QoS

Cost Effectiveness

Industry's lowest cost per DOCSIS 3.0/3.1 channel for this class of product, delivering an economical solution for high bandwidth multimedia applications

Overview

Casa Systems' upstream US16X8 module delivers unprecedented density and performance. The module supports a 16 port RF I/O module and can be provisioned to support up to 8 channels per port delivering a total of 128 channels per card.

The US16X8 DOCSIS (DCU) module is a complete DOCSIS upstream unit that includes RF burst receiving, signal demodulation, DOCSIS upstream MAC, PHY, as well as packet processing and QoS. Together with RF Upstream I/O (RFU) module, it serves as the RF upstream interface between the cable headend and DOCSIS-based cable modems. The DCU is a single-slot module, supports 16 DOCSIS burst receivers, and is a hot-swappable unit.

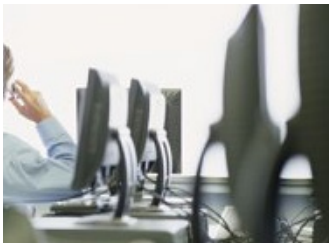


casa systems

Casa Systems Upstream US16X8 Module



US16x8 Module



Number of Channels	128 max number channels per card, 8 channels/port 16 OFDM channels, 1 channel/port
QAM modulation	QPSK, 8, 16, 32 and 64 QAM
OFDM modulation	BPSK, 8, 16, 32, 64, 128, 256, 512, 1024 QAM
QAM Data rate/channel	0.32 – 30.72 Mbps
OFDM Data rate/channel	950 Mbps
Input frequency range	5 – 100 MHz
Input range	-10 to 29 dBmV
Power consumption:	200W
Industry Specifications:	DOCSIS 3.0/3.1 EuroDOCSIS 3.0



Casa Systems, Inc.
100 Old River Road
Suite 100
Andover, MA 01810

Tel: 978.688.6706
Fax: 978.688.6584

info@casa-systems.com
www.casa-systems.com